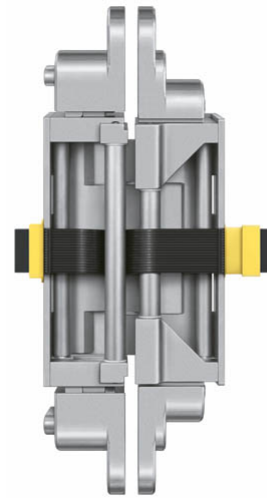


## TE 626 3D A8 Energy

made of solid stainless steel with permanent energy transfer for unrebated high performance heavy-duty doors with claddings of up to 8 mm on both sides



### Product features

- with permanent energy transfer
- individual connection adapter options
- material stainless steel
- cladding up to 8 mm
- completely concealed hinge system
- for timber, steel or aluminium frames
- for unrebated heavy-duty doors
- with comfortable 3D adjustment (side +/- 3,0 mm, height +/- 3,0 mm, compression +/- 1,0 mm)
- maintenance-free slide bearings

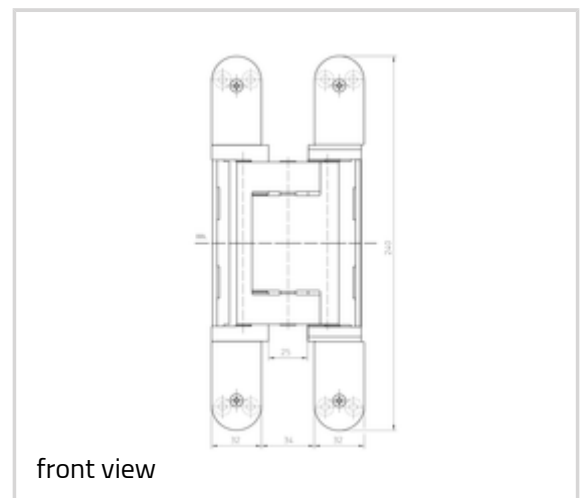
### Technical details

Attributes	Value
Load capacity	300,0 kg
Overall length	240,0 mm
Width (door part)	32,0/37,0 mm
Width (frame part)	32,0/37,0 mm
Cutter diameter	24,0 mm
Opening angle	180°
Wire cross section	0,14 mm <sup>2</sup>

### Quality marks



Certification UL



## TECTUS - TE 626 3D A8 Energy

Max. voltage	50 V
No. of wires	16
Max. current	0,8 A

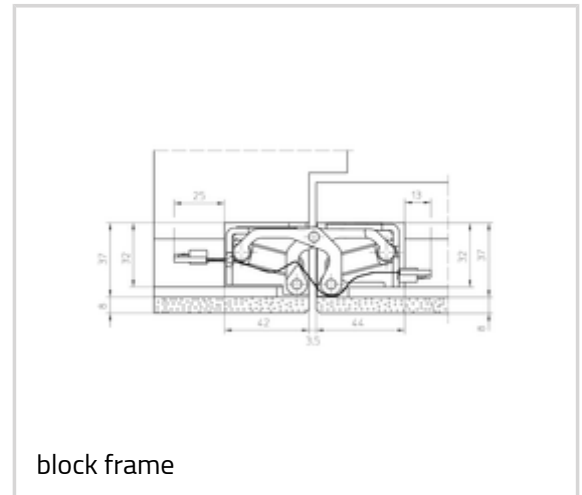
### Note

The load capacity mentioned above refers to two hinges per door leaf (1 x 2 m). Also the load capacities of the respective combined receiver have to be taken into consideration. For detailed information please look at the chapter "technical information".

When ordering the accessories please consider: There are two connection adapters TECTUS Energy needed per hinge. A connection plan can be downloaded.

Application accessories on request.

With an opening position of 180° the door may have to be fixed additionally.



### Suitable for

Universal milling frame

Template 5 250659 5	step 1
Template 5 250688 5	step 3 (without cladding)
Template 5 250689 5	step 2
Template 5 250690 5	step 3
Template 5 250939 5	additional routing Energy

### Combinations

TE 640 3D FZ

TE 640 3D A8 SZ

TE 640 3D ST

Adapter 1 TECTUS Energy

Universal adapter TECTUS Energy

Round cable 3m TECTUS Energy

Round cable 10m TECTUS Energy

### Function range

**TECTUS - TE 626 3D A8 Energy**



burglar resistance



fire resistance



smoke resistance



soundproof

**Item**

Finish(es)	Satin Stainless Steel (040)
OF-NR.	040
VPE	pack of 1
DIN	DIN right and left hand
Item No.	5 400682 0 04001
EAN	4015471124991