



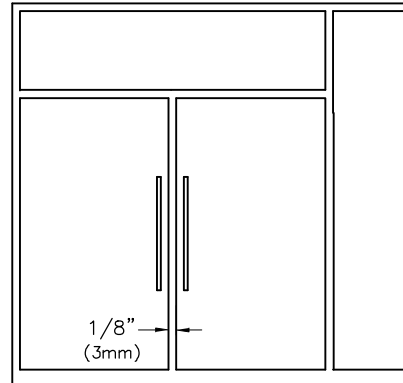
Glass Lock

UNIT: mm

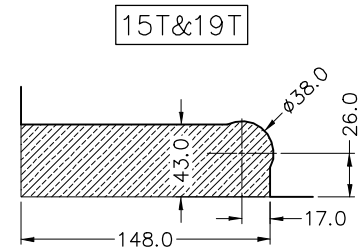
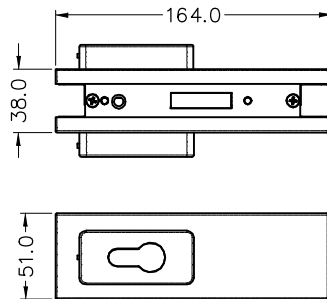
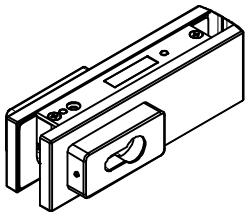
Material	Material NO.	Cover Finish
Stainless Steel	SUS316	PSS,BSS,PVD
	SUS304	
Aluminium	AL1050	AL,GD,DU,DB
Brass	C2680	PB,BSB

For 15mm(5/8")~19mm(3/4") Glass

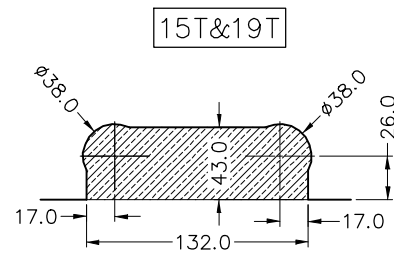
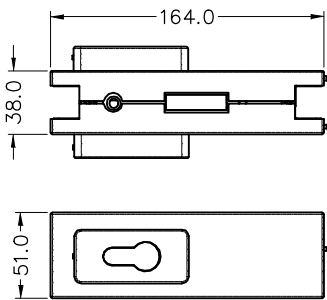
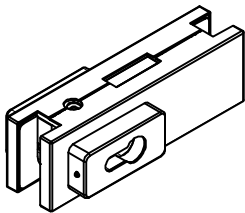
- { PSS: Polished Stainless Steel
- { BSS: Brushed Stainless Steel
- { PVD: Polished Zirconium
- { AL: Brushed Aluminium Anodizing
- { CL: Matt Aluminium Anodizing
- { DU: Duranodic Aluminium Anodizing
- { DB: Brushed Duranodic Aluminium Anodizing
- { PB: Polished Brass
- { BSB: Brushed Satin Brass



GL1000



GL2000



GK2000

