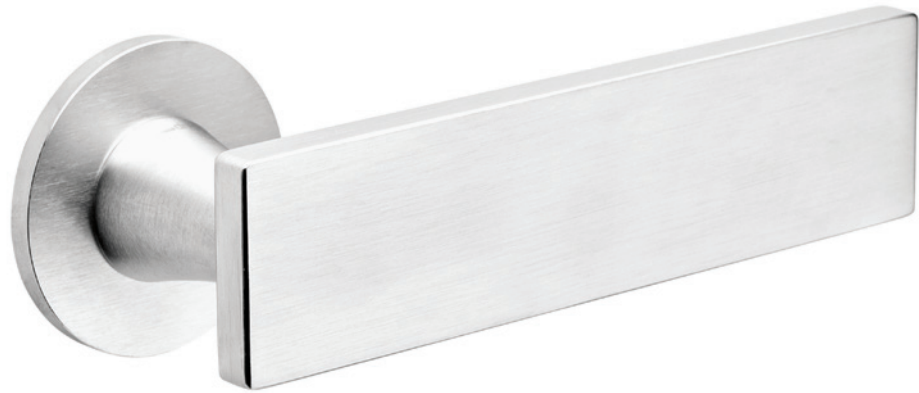


ARETÈ / L

Design: Mauro Ronchi

Ottone forgiato
Forged brass

Prodotto italiano



AB
Bronzato
Antique bronze



OGH
Bronzo satinato opaco
Matt satin bronze



OC
Power cromo lucido
Power polished chrome



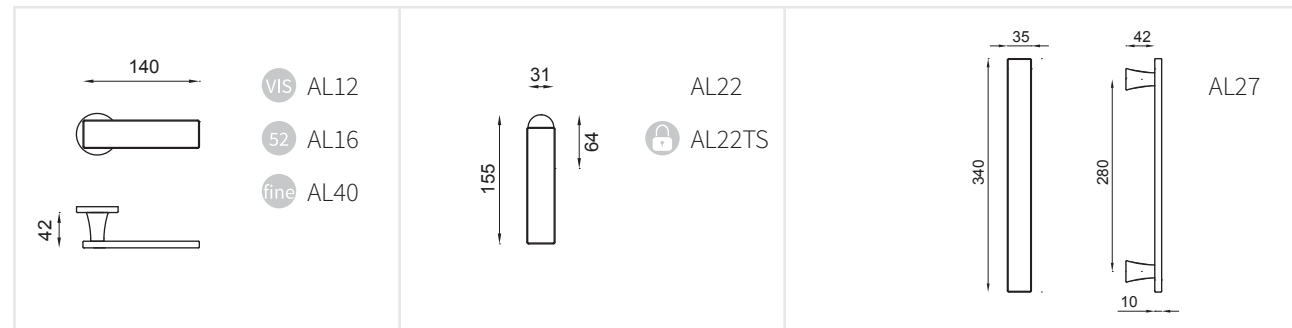
PCS
Power cromo satinato
Power satin chrome



OGS
Grafite satinato
Satin graphite



PVX
PVD inox
Steel PVD



VIS Garantito 10 anni
10 years guaranteed

fine Less is fine
4 MM

Attestato di resistenza al fuoco
Attestation of fire resistance

TSDK total security DK
TSDK total security dreh kipp



dnd
by Martinelli