

For 1 and double-wing/folding doors made from metal, plastic and wood

Main features

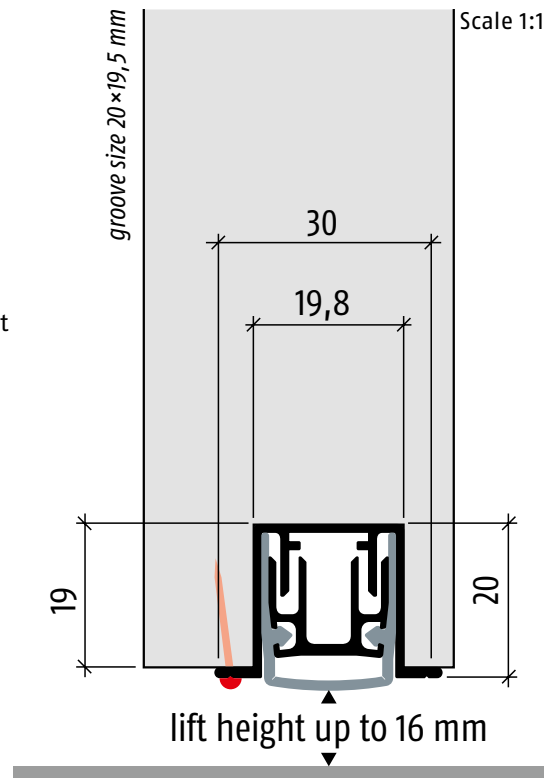
- lift height 16 mm
- unilateral release with parallel drop-down
- does not trail on the floor
- automatic compensation to inclined floors
- even for double-wing doors with flush bolt or driving bar
- acoustic insulation of 50 dB (at 7 mm space to the floor)
- can be shortened to the next shorter length in stock
- high-grade silicone lip, simple lift height adjustment
- warranty 7 years

Executions

- Planet PU RD/50dB, smoke-shielding
- Planet PU FH+RD/50dB, fire-retardant and smoke-shielding
- accordion walls
- assembly on the top
- special versions on request

Double-wing / folding doors

- refer to chapter Flush bolt | Drilling



Advertising text

Planet PU RD/50dB, smoke-shielding

Automatic door drop-down seal **Planet PU RD/50dB**, for sound absorption and smoke-shielding doors, release on hinge side with automatic compensation in case of an inclined floor, parallel drop-down, seal lift height up to 16 mm. flush to put in groove. Silicone lip, fastening on the bottom. Aluminum profile 19,8×20 mm.

Planet PU FH+RD/50dB, fire-retardant and smoke-shielding

Automatic door drop-down seal **Planet PU FH+RD/50dB**, for sound absorption-, smoke-shielding- and fire-retardant doors, release on hinge side with automatic compensation in case of an inclined floor, parallel drop-down, seal lift height up to 16 mm, flush to put in groove, self-extinguishing silicone lip, fastening on the bottom. Aluminum profile 19,8×20 mm.

Technical specifications

Profile material:	aluminum, 19,8×20 mm
Groove size:	20×19,5 mm
Seal profile:	high-grade silicone or high-grade self-extinguishing silicone
Seal height/lift height:	up to 16 mm
Sound absorption value:	up to 50 dB at 7 mm space to the floor, up to 43 dB at 16 mm space
Lift height adjustment:	on the release knob with an Allen key 3 mm
Lengths in stock:	335, 460, 585, 710, 835, 960, 1085, 1210, 1335, 1460, 1585 mm
Special lengths:	on request up to 6000 mm
Release:	unilaterally on hinge side
can be shortened:	up to 125 mm
Fastening:	from the bottom with screws or nails/pins available with the customer
Test approvals:	on request

For 1 and double-wing/folding doors made from metal, plastic and wood

Order specification

- **Planet PU RD/50dB**,
incl. stopping plate, type 1
Part number 53 xxx*
- **Planet PU FH+RD/50dB**,
incl. stopping plate, type 1
Part number 54 xxx*

*xxx = refer to price list for profile length

Accessories / options

- **Planet stopping plate**, type 1, stainless
Part number 900 014
- cut the **Planet to fix dimension**
Part number 900 200
- **Drill hole 5×13 mm**,
including plastic guide
Part number 900 190
- **Drill hole Ø 10,8 mm**
Part number 900 280
- **Planet BM floor recess plates**
refer to chapter Flush bolt I BM



Planet PU profile



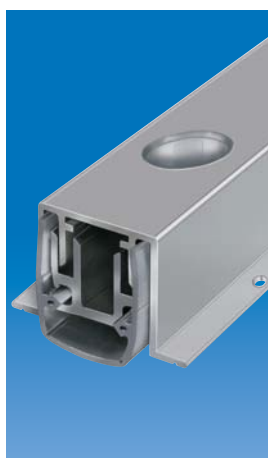
Planet PU with release knob



Planet stopping plate type 1, stainless



Option:
Planet PU with Planet
Drill hole 5×13 mm



Option:
Planet PU with Planet
Drill hole Ø 10,8 mm



Option:
Planet PU bevel lip for
wavy floors



Planet KR flush bolt,
incl. strike plate, refer to
chapter Flush bolt |
Drill hole.
Option: floor recess plate
5×13 mm, narrow

SWISS MADE