

SIKE

Design: Karim Rashid

ottone stampato a caldo - hot stamped brass

FINITURE / FINISHES



SK14P - PCS



OC
Cromo
Chrome



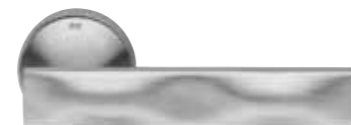
PCS
Power cromosat
Power satchrome



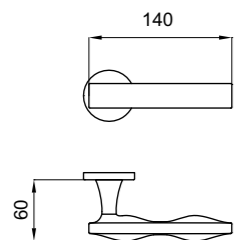
ONS
Nickelsat
Satin nickel



PVD
Oro
Gold

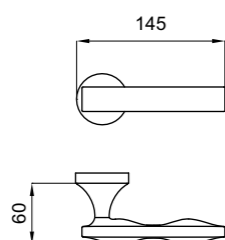


PVX
Inox
Steel



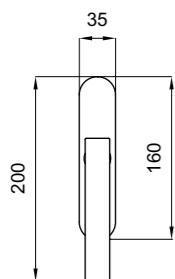
VIS

SK12
SK12P
SK12Y
SK12T

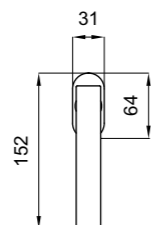


R

SK14
SK14P
SK14Y
SK14T



SK20C
SK21M



SK22

92

SIKE

Design: Karim Rashid



As awarded by The Chicago Athenaeum: Museum of Architecture and Design

