

TE 720 2D

for aluminium doors with 2D adjustment

hinge

Technical details

load capacity	120,0 kg
length (door/frame)	170,0/230,0 mm
width (frame)	36,0 mm
cutter diameter	12,0 mm
opening angle	120° degree

descriptive text

SIMONSWERK TECTUS hinge TE 720 2D. Completely concealed for aluminium profile systems. With 2D adjustment, load capacity up to 120 kg, opening angle up to 120°, overall length 230 mm, right hand and left hand applicable, maintenance-free slide bearings, two-dimensionally adjustable: side +/- 3,0 mm, height +/- 3,0 mm. Finish...

Note

The load capacity mentioned above refers to the use of 2 hinges per door leaf (1 x 2 m).

Production of hinge version depending on the profile version on request.

Lot dimension 100 pieces at least.

The routing data are created customized. Please contact us.

Product features

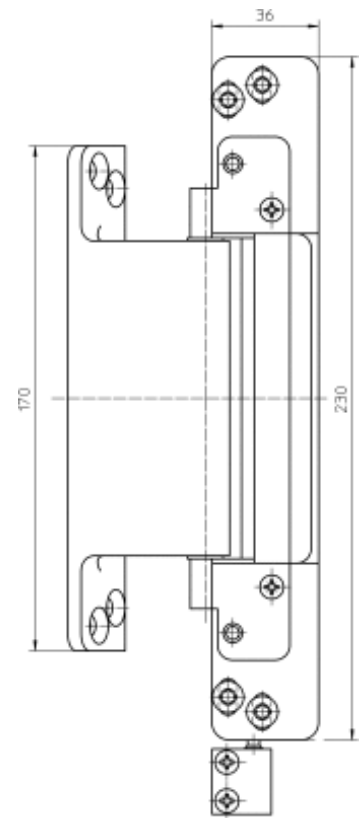
- completely concealed hinge system
- for aluminium profile systems
- for unrebated heavy-duty doors
- maintenance-free slide bearings
- 2D adjustable (side +/- 3,0 mm, compression +/- 3,0 mm)



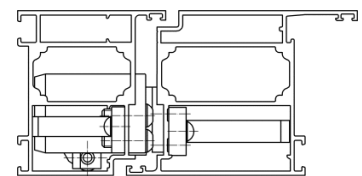
TE 720 2D

for aluminium doors with 2D adjustment

hinge



front view



cross section 1