

TE 526 3D Energy

made from solid stainless steel with permanent energy transfer for unrebuted heavy-duty doors

hinge

Technical details

load capacity	120,0 kg
overall length	155,0 mm
width (door)	26,0 mm
width (frame)	26,0 mm
cutter diameter	24,0 mm
opening angle	180° degree
no. of wires	16 No. of wires
wire cross section	0,14 mm
max. voltage	60 V
max. current	0,8 A

descriptive text

SIMONSWERK TECTUS hinge TE 526 3D Energy made from solid stainless steel with integrated and permanent energy transfer. Completely concealed for unrebuted doors with timber, steel and aluminium frames. With comfortable 3D adjustment, load capacity up to 120 kg, opening angle up to 180°, overall length 155 mm, right hand and left hand applicable, maintenance-free slide bearings, three-dimensionally adjustable: side +/- 3,0 mm, height +/- 3,0 mm, compression +/- 1,0 mm. Finish...

Note

The load capacity mentioned above refers to the use of 2 hinges per door leaf (1 x 2 m).

Finger protection on the hinge side due to a small gap between door and frame.

Scope of supply

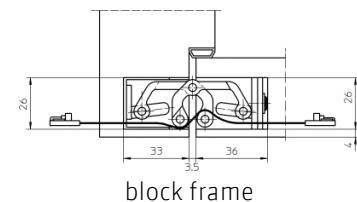
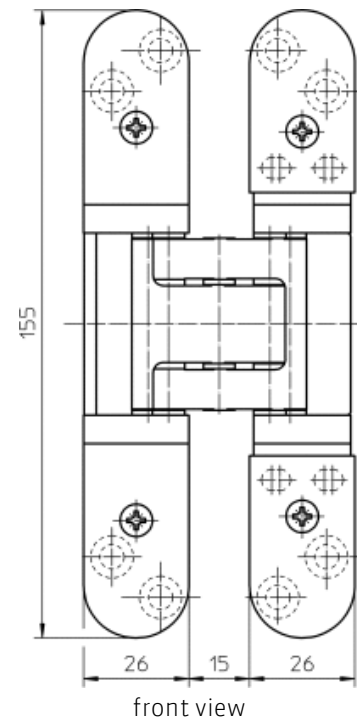
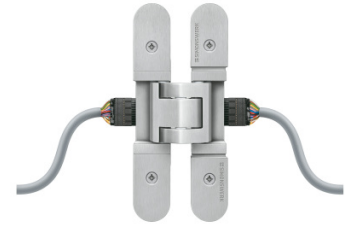
Special ribbon cable with plug connection to round cable at both ends. Cable set consists of 2 round cabled both with reverse-polarity-protected connecting socket for the special ribbon cable (2 x round cable 3,0 m), opposite cable ends open.

Product features

- completely concealed hinge system
- for timber, steel or aluminium frames
- for unrebuted heavy-duty doors
- maintenance-free slide bearings
- 3D adjustable (side +/- 3,0 mm, height +/- 3,0 mm, compression +/- 1,0 mm)
- with permanent energy transfer
- material stainless steel

Functional areas

fire resistance, smoke resistance, soundproof und burglar resistance



TE 526 3D Energy

made from solid stainless steel with permanent energy transfer for unrebuted heavy-duty doors

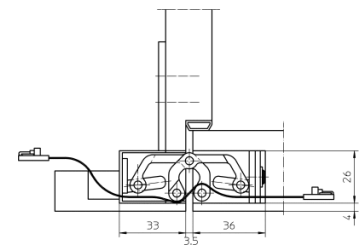
hinge

Combination

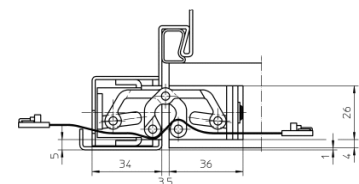
receiver	TE 525 3D FZ/1 TE 525 3D SZ
----------	--------------------------------

installation tools

universal milling frame	
template 5 250547 5	frame / door
template 5 250939 5	flat line routing energy



casing frame



steel frame