

TE 640 3D Energy

with permanent energy transfer for unrebated high performance heavy-duty doors

hinge

Technical details

load capacity	200,0 kg
overall length	240,0 mm
width (door)	32,0 mm
width (frame)	32,0 mm
cutter diameter	24,0 mm
opening angle	180° degree
no. of wires	16 No. of wires
wire cross section	0,14 mm
max. voltage	60 V
max. current	0,8 A

descriptive text

SIMONSWERK TECTUS hinge TE 640 3D Energy with integrated and permanent energy transfer. Completely concealed for unrebated, heavy-duty doors with timber, steel and aluminium frames. With comfortable 3D adjustment, load capacity up to 200 kg, opening angle up to 180°, overall length 240 mm, right hand and left hand applicable, maintenance-free slide bearings, three-dimensionally adjustable: side +/- 3,0 mm, height +/- 3,0 mm, compression +/- 1,0 mm. Finish...

Note

The load capacity mentioned above refers to the use of 2 hinges per door leaf (1 x 2 m).

Finger protection on the hinge side due to a small gap between door and frame.

Scope of supply

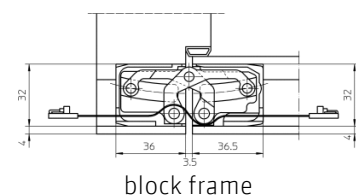
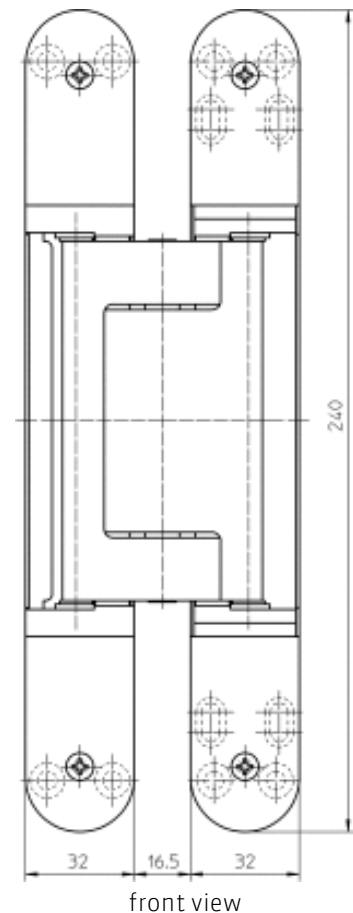
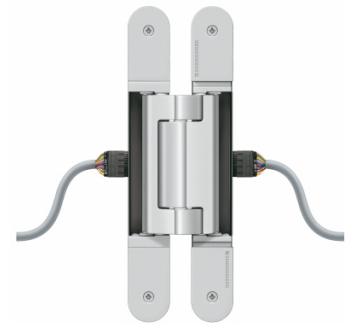
Special ribbon cable with plug connection to round cable at both ends. Cable set consists of 2 round cabled both with reverse-polarity-protected connecting socket for the special ribbon cable (2 x round cable 3,0 m), opposite cable ends open.

Product features

- completely concealed hinge system
- for timber, steel or aluminium frames
- for unrebated high performance heavy-duty doors
- maintenance-free slide bearings
- with comfortable 3D adjustment (side +/- 3,0 mm, height +/- 3,0 mm, compression +/- 1,0 mm)
- with permanent energy transfer

Functional areas

fire resistance, smoke resistance, soundproof und burglar resistance



TE 640 3D Energy

with permanent energy transfer for unrebated high performance heavy-duty doors

hinge

Combination

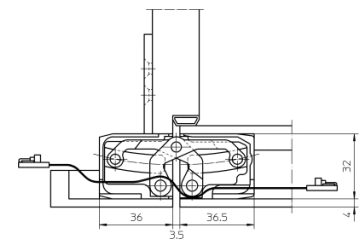
receiver	TE 640 3D FZ/1 TE 640 3D SZ
----------	--------------------------------

installation tools

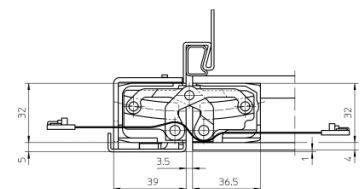
universal milling frame	
template 5 250659 5	step 1
template 5 250689 5	step 2
template 5 250939 5	flat line routing energy

Items (DIN reference: DIN right and left hand)

finishes(es)	F1-coloured 124
packing unit	pack of 1
item number	5 400625 0 12401
finishes(es)	stainless steel look 126
packing unit	pack of 1
item number	5 400625 0 12601



casing frame



steel frame